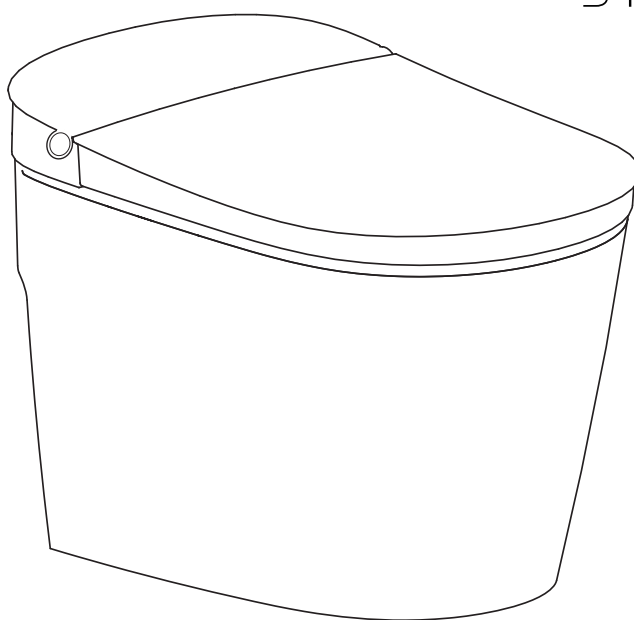


STUDIOLUX



MODEL: SLi1000

Installation instructions and manuals

Installation instructions for skilled technicians!

After installation, please hand over the installation instructions to the user.

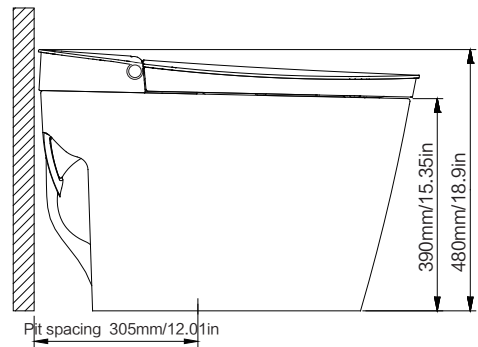
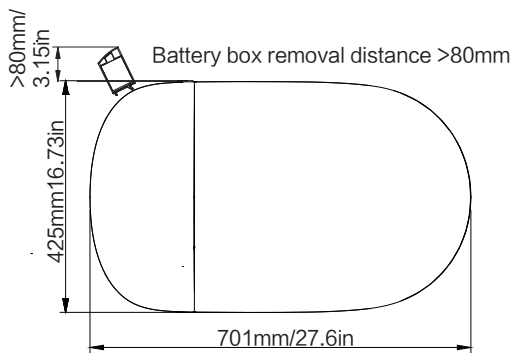
IMPORTANT SAFEGUARDS

READ ALL INSTRUCTION BEFORE USING

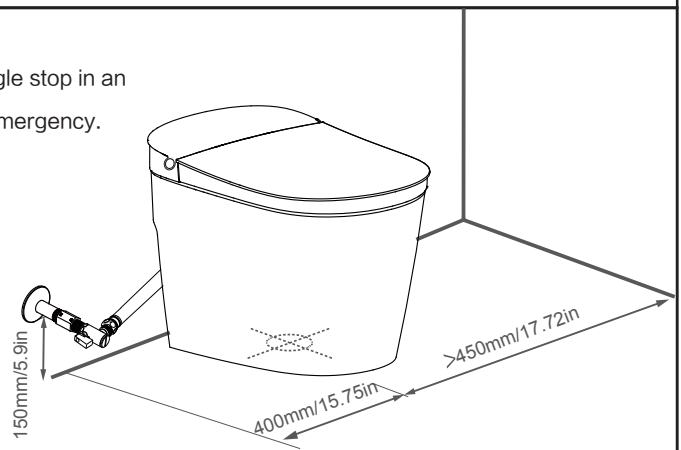
When using the electronic product, especially in the presence of children, basic safety precautions should always be followed, including the following. Please read all instructions before use.

1. Do not use while bathing.
2. Do not place or store the product where it may fall or be dragged into a bathtub or sink.
3. Do not place in or drop into water or other liquid.
4. Do not touch the product if it falls into the water, and unplug the power supply immediately.
5. Please keep a close watch when children or disabled persons are using or near the products in use.
6. This product is used only for the intended purpose described in this manual. Do not use accessories not recommended by the manufacturer.
7. Do not clog the vents of the product, or place the product on a soft surface, such as a bed or sofa, where the vents may be blocked. Keep the air unblocked and no cotton wool or hair, etc. in the pores.
8. Don't use products while sleeping or drowsy.
9. Do not put or insert any object into any opening or hose.
10. Do not use outdoors or operate where aerosol (spray) products are being used or when oxidated products are being administered.
11. Do not clean the product and power plug with water, it might cause electric shock or damage.
12. Do not disassemble, repair or modify the product, otherwise it might cause fire.
13. Do not stand or put heavy things on the seat, it might cause product damage.
14. Do not throw burning items like cigarette butts into the product, it might cause fire.
15. Do not open or close the cover or seat forcibly, and do not lean on the cover when the product in use, it might cause product damage.
16. Please note that changes or modifications of this product is not expressly approved by the party responsible for compliance could void the user's authority to operate the equipment.

Technical drawings







NOTE: It is necessary to install the provided angle stop in an accessible area for quick shutoff in case of an emergency.



Precautions before use

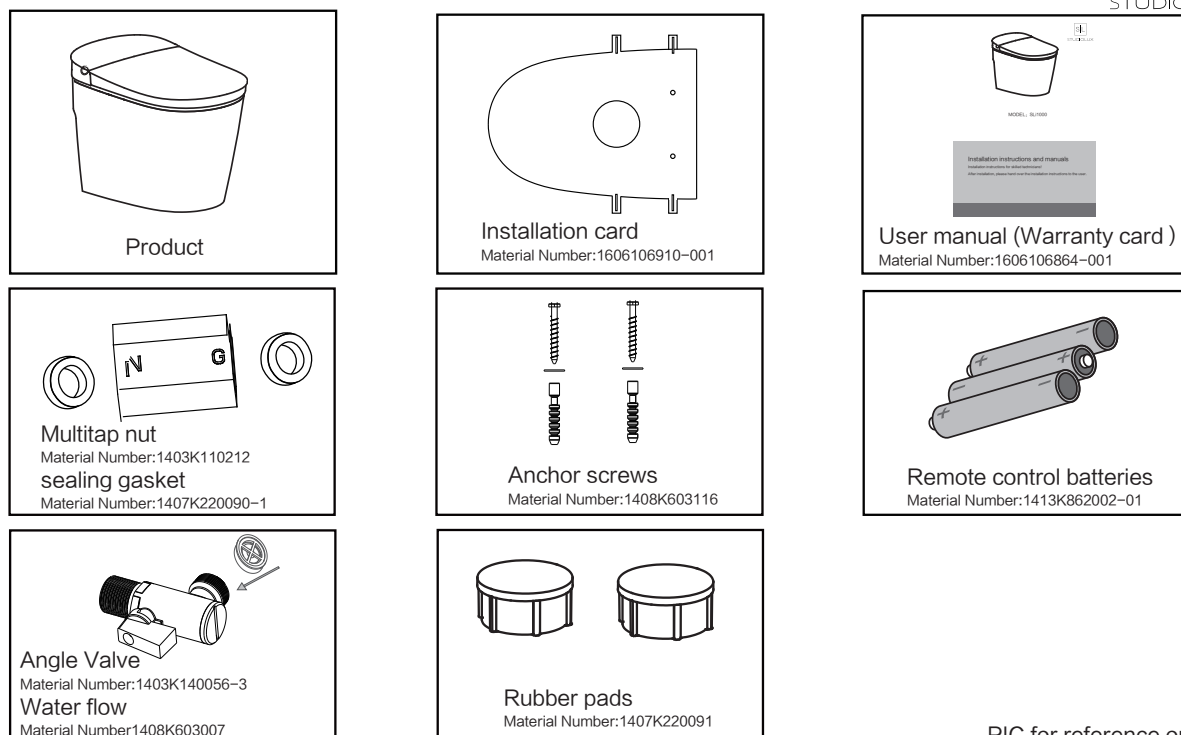
In order to avoid personal injury and property damage to users and other people, please read the following safety precautions carefully and strictly observe them. After reading, please keep this manual in a drawer where you can access easily.

 <p>PROHIBITED</p>	<ul style="list-style-type: none"> ☆ It is strictly forbidden to disassemble, repair or transform the product by yourself, otherwise it may cause fire or electric shock. ☆ It is strictly forbidden to use this product when the seat and upper cover are not fully opened or closed. ☆ It is strictly forbidden to pour water, detergent, urine or other liquid on and around the surface, otherwise it may cause fire or electric shock.
 <p>NOTICE</p>	<ul style="list-style-type: none"> ☆ Do not operate products that have fallen into the water or soaked in water. ☆ Please do not connect the inlet water line with the outlet water line of the water heater. The inlet water temperature should be 3℃ – 35℃. ☆ Do not let the sunlight directly irradiate the product, in order to avoid the product discoloration or the burn due to the temperature instability. ☆ Do not use industrial water, waste water, sea water, reclaimed water and other water sources, otherwise it may cause skin inflammation and other diseases. ☆ The product must be connected to a separate circuit. No other electrical product shares the circuit with this product. Sharing a circuit can cause a fuse to blow out or a circuit breaker to trip. Continuous use in such cases may result in fire or property damage. ☆ This product is for household use only. ☆ Do not use banana oil, gasoline, liquid medicine and detergent, insecticide and hard brush to clean this product. Toilet cleaner may only be used for ceramic body. ☆ Do not use this product in rooms with humidity more than 90% RH, the use environment should have a dry and wet separation, such as installing shower room or shower curtain. ☆ in cold winter, if do not use the product for a long time, please discharge the tank water following the instructions. Or it might cause product damage. ☆ For the newly decorated house, the residual mud and sand in the pipeline are easy to damage the machine and affect human health. Please remove the sewage from the pipeline before installation.

 <p>NOTICE</p>	<ul style="list-style-type: none"> ☆ Do not stand on the seat, toilet cover, do not place heavy objects, and do not press or lean on the toilet cover, so as not to damage the product. ☆ Please set the temperature of water and seat on 'low' when the old, weak, sick and disabled or children use the product, and touch the sensor when you sit on the seat properly. ☆ This appliance is provided with a protective device that may make the appliance inoperable under some abnormal conditions (such as immersion of the appliance). If the appliance becomes inoperable, contact the STUDIOLUX service team.
 <p>MUST ABIDE BY</p>	<ul style="list-style-type: none"> ☆ Do not let children play with this product. ☆ Do not supply water to the product before installation completed. ☆ When installing, disassembling, repairing and maintaining the product, the water supply valve must be closed. ☆ After the appliance is scrapped, please hand it over to a qualified professional recycling company or organization for disposal. It should not be discarded at will, so as to avoid harm to the environment. ☆ To prevent damage caused by freezing, please take measures to keep warm. If the room temperature is below 0°C, it is recommended to drain the water in the product to prevent internal frost cracking. ☆ Product installation and use should be away from heat and fire sources.

SAVE THESE INSTRUCTIONS

1. List of materials

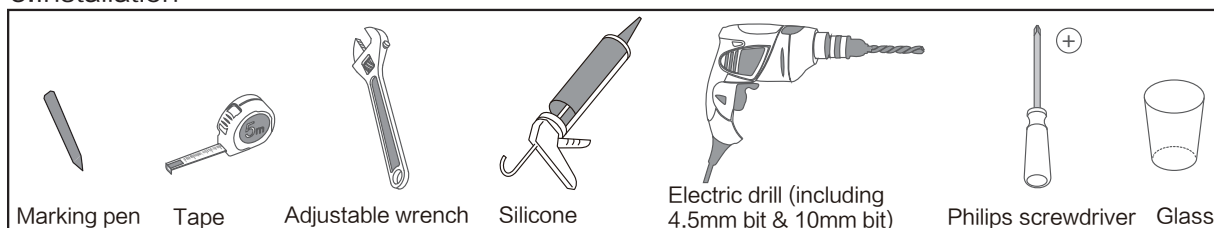


PIC for reference only

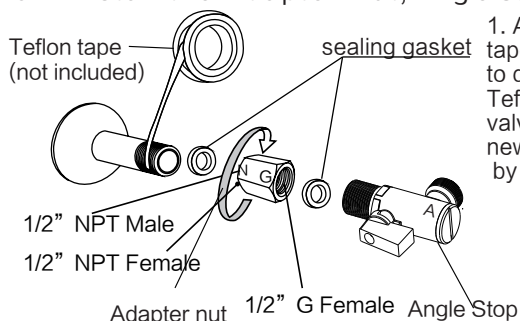
2. Technical specifications

Seat and Cover	Soft close	●	Anbinate temp.	0°C~40°C
Flush	Dual flush	●	Pressure of Water supply	30psi~80psi(Static pressure)
	Auto flush	●	Flow of Water supply	≥25L/min
	Water proof rate	IPX4	Temp of Water supply	3°C~35°C
			Product size	701X425X480mm

3. Installation

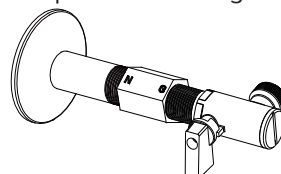


3.1 Install the Adapter Nut, Angle Stop

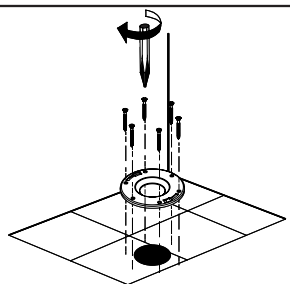
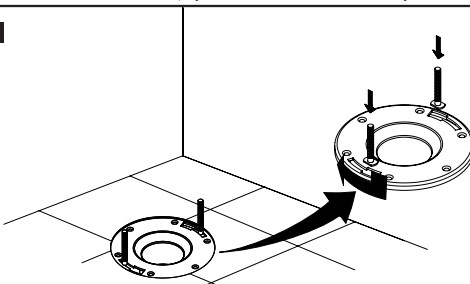
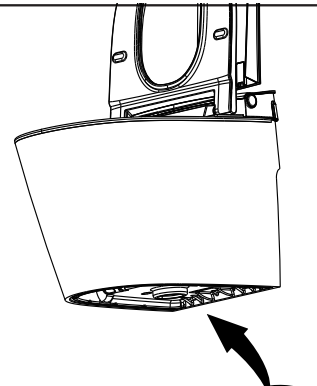
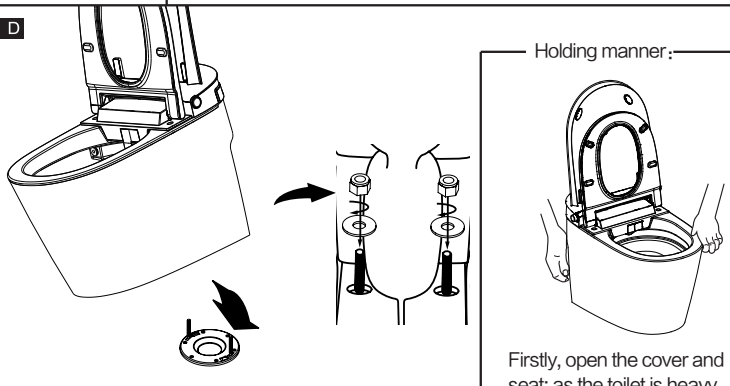


1. After external thread of water outlet pipe is wrapped with Teflon tape, adapter nut need install sealing gasket ,tighten the adapter nut to direction N, then after external thread of angle stop is wrapped with Teflon tape, and tighten the connecting nut to direction G. If the angle valve has been installed on the wall, to ensure proper installation of new angle stop, the angle valve shall be replaced with the angle stop by professional personnel.

Installed adapter nut and angle stop



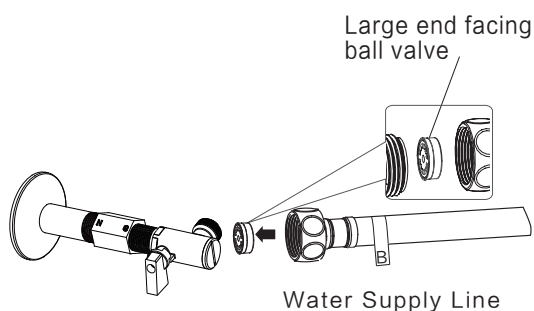
3.2 Install Toilet and Toilet Wax Ring(For Option B installation, please see template.)

<p>A</p>  <p>Install the floor drain cover connector(not included) .</p>	<p>B</p>  <p>Position correctly the two fixing bolts of the floor drain.</p>
<p>C</p>  <p>Insert the wax ring(not included) under the toilet.</p>	<p>D</p>  <p>Position the toilet on the floor drain,making sure the fixing bolts are aligned with the toilet's holes.</p> <p>Holding manner : Firstly, open the cover and seat; as the toilet is heavy, lifting the product by two persons at the same time is needed.</p>

3.3 Install the Water Supply Hose

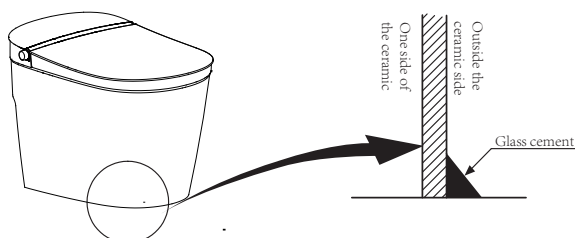
As shown in the figure, install water supply line to Angle stop.

- 1) If the water inlet pressure is greater than 30psi, please install the flow limiting plate in the angle stop;
- 2) Only use the accessory parts that are shipped with the product for installation;
- 3) After installation, turn on the power supply and check water seal. Water leakage shall be avoided.



3.4 Tips for comfortable use

Spots are easily found at the lower part of the product after long time of water or urine penetration. To avoid this, silicone is recommended to paste around the lower part to seal the tiny gap between the lower part and the ground.



4. Product function

1.Button operations

Press  (about 1s) and release side button to full flush.

2.The mechanical seat switch function

While sitting on seat, the mechanical seat switch will be on to detect whether the user is on seat. The mechanical seat switch on about 10s, achieve full flush after leaving seat 6s.

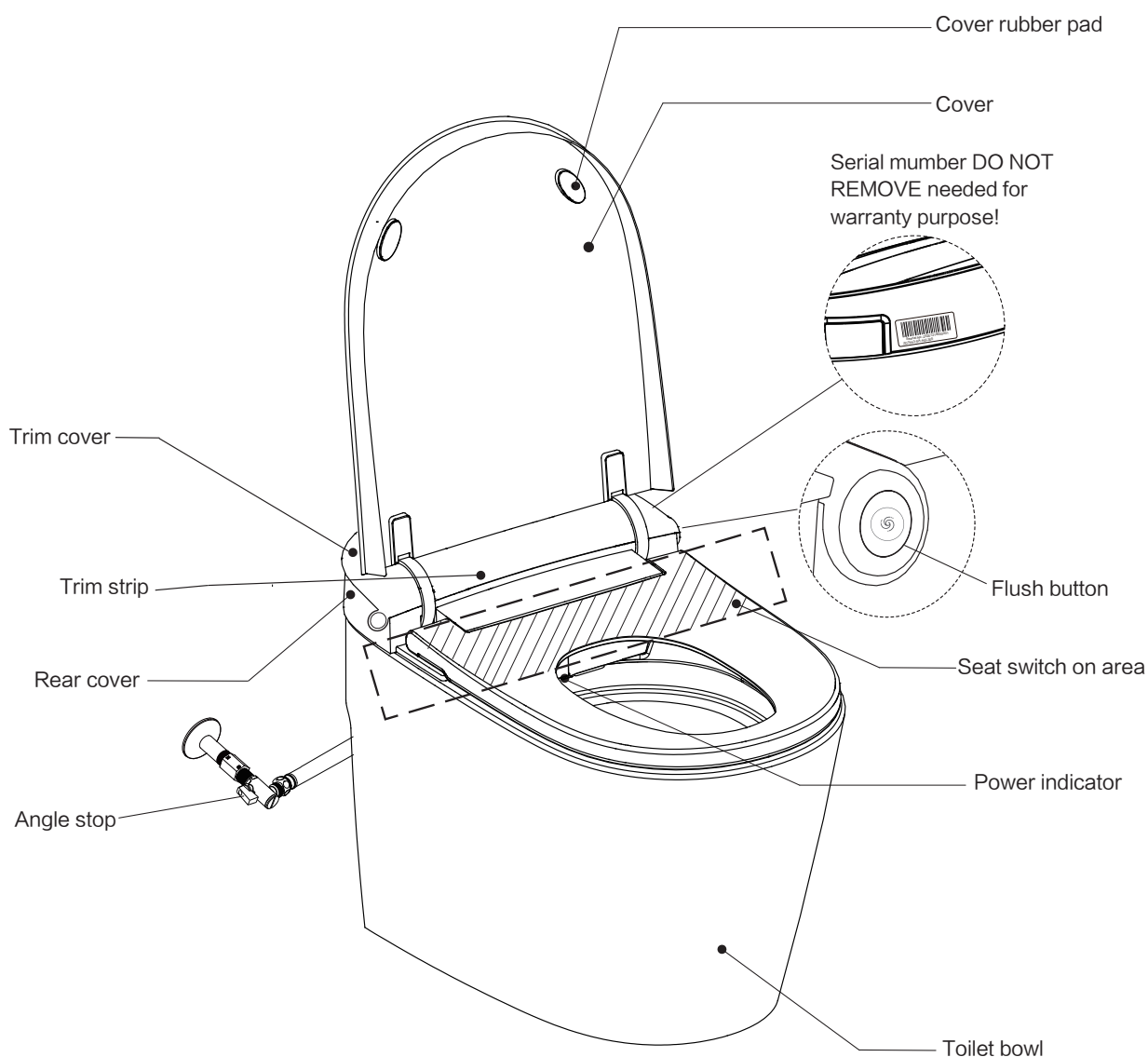
3.Men's toilet function

After opened seat for about 10s, close seat to achieve the flush function after gentle urinating.

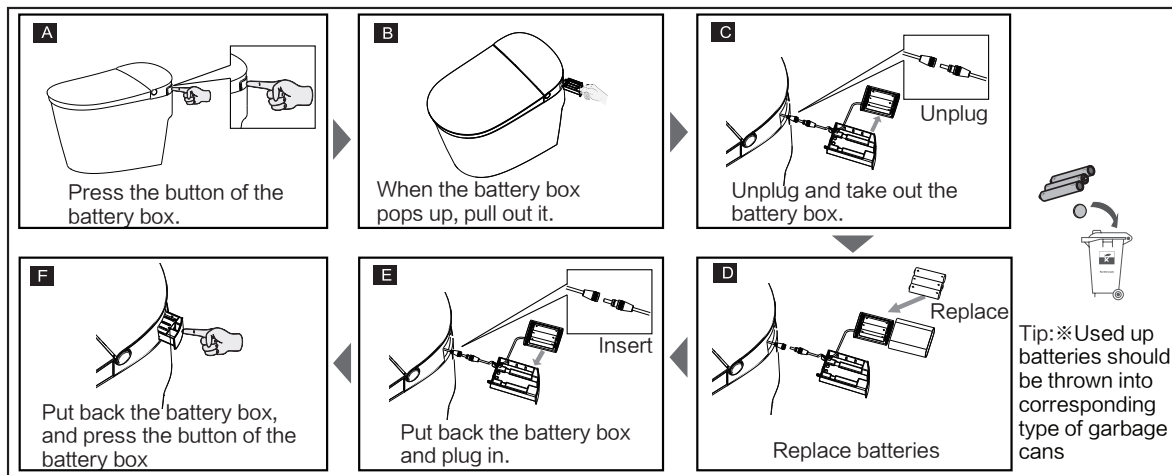
4.Indicator light

The indicator light will flash when the battery is low.

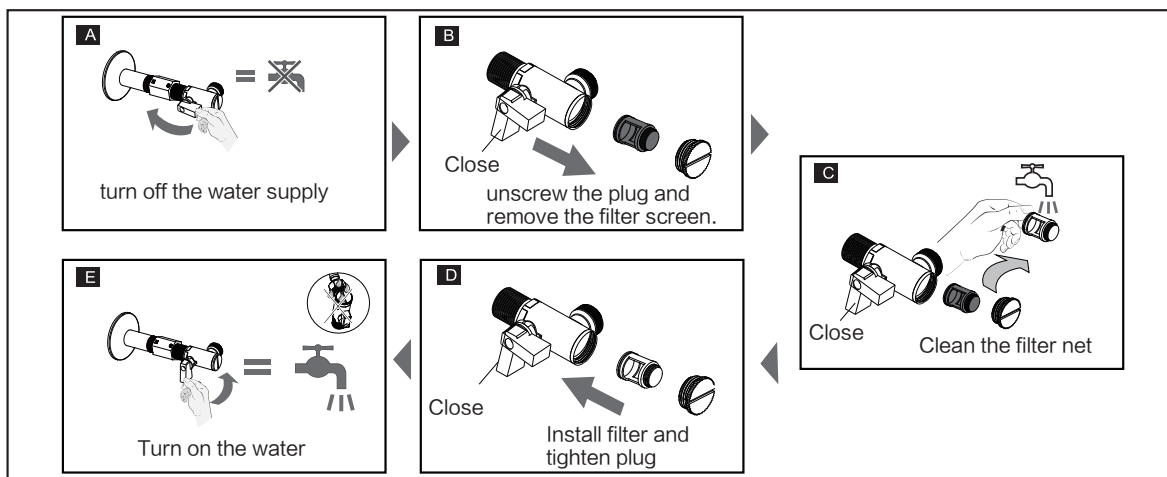
5.Part identification



6.Replacement of power

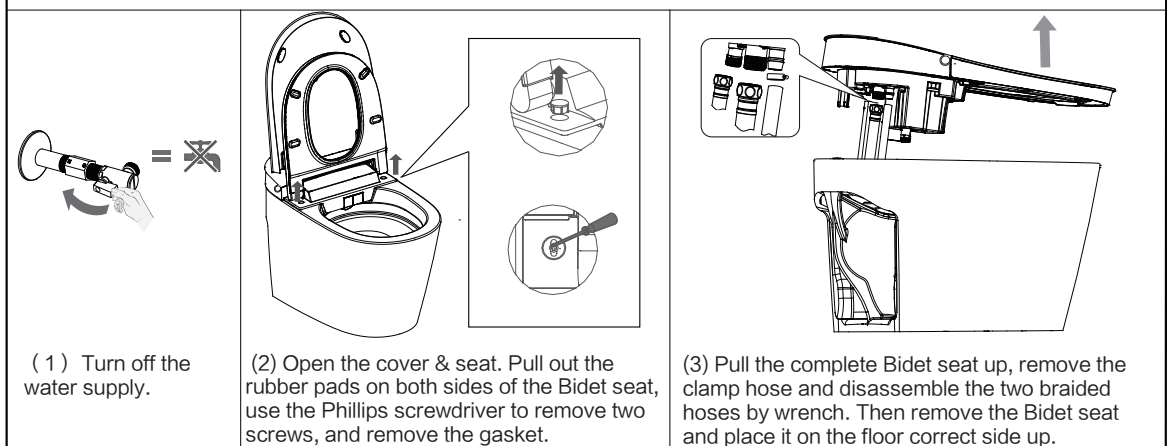


7.cleansing filter net

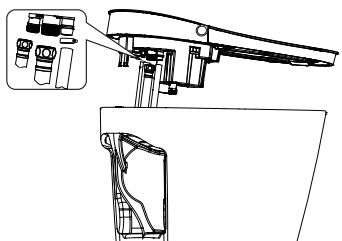


8. Removal and installation of Bidet seat

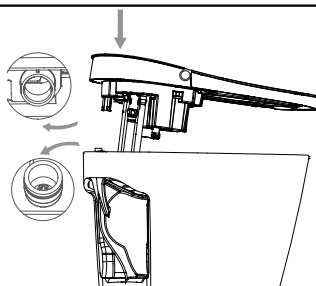
Bidet seat removal



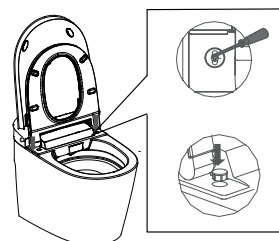
Bidet seat installation



(1) connect and tight the three braided hoses to Bidet seat by wrench, then insert the hose and install the clamp.



(2) Align the location hole of Bidet seat with toilet bowl guide pillar, press into the Bidet seat.



(3) Place the gasket on both sides of the Bidet seat, lock the screw and insert the rubber pads. Then turn on the water supply and plug in.

9.Cleaning and maintenance

Cleaning the Cover & Seat:

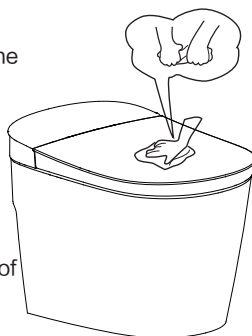
Turn off the water supply.

Use a soft and wet cloth to clean the product (Wring out a cloth)

Notices:

Do not use dry cloth or toilet paper to clean the product or the appearance of product will be scratched.

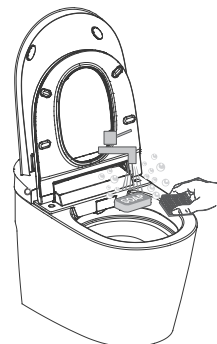
Avoid putting water into the inside of back cover, otherwise some electronic components in the back cover might be damaged.



Cleaning the toilet bowl:

Notices:

Clean the toilet bowl with cleaner and flush the cleaner within 3 minutes.



Warranty card

Product model	
Manufacturing number	
Customer name	
Tel	
Add	
Sales company	
Tel	
Date of purchase	

The 2nd copy send back

Maintenance record

Date of maintain	Maintenance items	Maintenance company	Maintenance personnel signature

There may be differences between the contents of this manual and the real object. Please refer to the real object. If the products and attachments have any update, we will not notice.

1606106422-001 1.0

Type of Flush valve:FCS-6-KM-3

US Office
30131 Town Center Dr
Suite 298
Laguna Niguel, CA 92677
949-900-4353
support@studioluxcorp.com
www.studioluxcorp.com